

Industrial Dual Band 802.11ax Wireless Access Point
IAP-1800AX/IAP-2400AX

Quick Installation Guide

Table of Contents

1. Contents	3
2. Requirements	4
3. Device Upper Panel.....	5
3.1 Wiring the Power Inputs	5
3.2 Grounding the Device.....	6
3.3 Wiring the Fault Alarm Contact	7
3.4 Wi-Fi Antenna Installation.....	7
4. Starting Web Management	8
4.1 Logging on to the Industrial 802.11ax Wireless AP	9
5. Recovering Back to Default Configuration.....	12
6. Central Management through PLANET NMS	13
7. Customer Support	14

1. Package Contents

Thank you for purchasing PLANET Industrial 802.11ax Wireless Access Point with 5 10/100/1000T LAN Ports, such as IAP-1800AX or IAP-2400AX. The descriptions of these models are as follows:

IAP-1800AX	Industrial Dual Band 802.11ax 1800Mbps Wireless Access Point with 5 10/100/1000T LAN Ports
IAP-2400AX	Industrial 5GHz 802.11ax 2400Mbps Wireless Access Point with 5 10/100/1000T LAN Ports

“Industrial 802.11ax Wireless AP” mentioned in this Quick Installation Guide refers to the above two models.

Open the box of the **“Industrial 802.11ax Wireless AP”** and carefully unpack it. The box should contain the following items:

- Industrial 802.11ax Wireless AP x 1
- Quick Installation Guide x 1
- PLANET CloudViewer Quick Guide x 1
- Wall Mounting Kit x 1
- Wi-Fi Antenna
 - IAP-1800AX: x 2
 - IAP-2400AX: x 4
- Antenna Dust Caps
 - IAP-1800AX: x 2
 - IAP-2400AX: x 4
- RJ45 Dust Caps x 5

If any item is found missing or damaged, please contact your local reseller for replacement.

2. Requirements

- Workstations running Windows 7/8/10/11, macOS 10.12 or later, Linux Kernel 2.6.18 or later, or other modern operating system are compatible with TCP/IP protocols.
- Workstations are installed with Ethernet NIC (Network Interface Card)
- **Ethernet Port Connection**
 - Network cables -- Use standard network (UTP) cables with RJ45 connectors.
 - The above PC is installed with Web browser.



Note

It is recommended to use Google Chrome, Microsoft Edge or Mozilla Firefox to access the Industrial 802.11ax Wireless AP. If the Web interface of the Industrial 802.11ax Wireless AP is not accessible, please turn off the anti-virus software or firewall and then try it again.

3. Device Upper Panel

The Upper Panel of the Industrial 802.11ax Wireless AP consists of two terminal block connectors within 6 contacts. Please follow the steps below to insert the power wire.

3.1 Wiring the Power Inputs

1. Industrial 802.11ax Wireless AP Input Voltage: 9-54V DC.
2. Insert positive/negative DC power wires into Contacts 1 and 2 for Power 1, or Contacts 5 and 6 for Power 2.

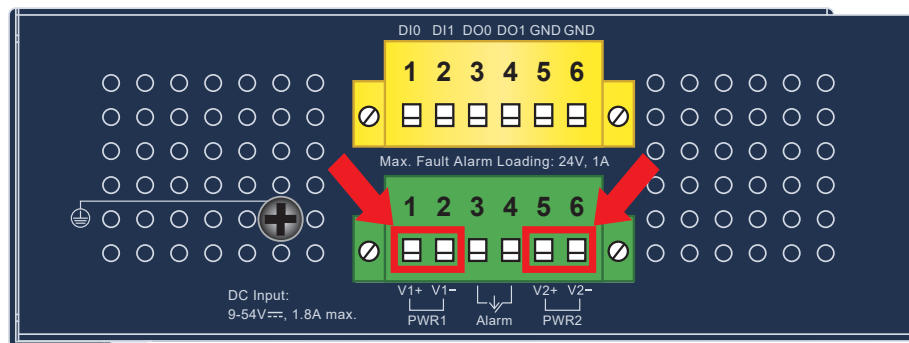


Figure 3-1: Industrial 802.11ax Wireless AP Upper Panel Power Input

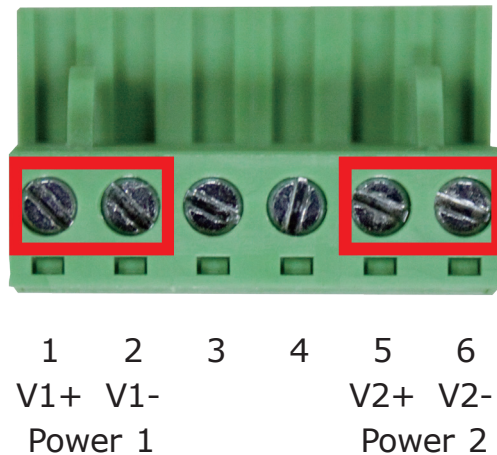


When performing any of the procedures like inserting the wires or tightening the wire-clamp screws, make sure the power is OFF to prevent from getting an electric shock.



Please make sure the input voltage is under the specification of the Industrial 802.11ax Wireless AP.

3. Tighten the wire-clamp screws for preventing the wires from loosening.



Note

The wire gauge for the terminal block should be in the range from **12** to **24** AWG.

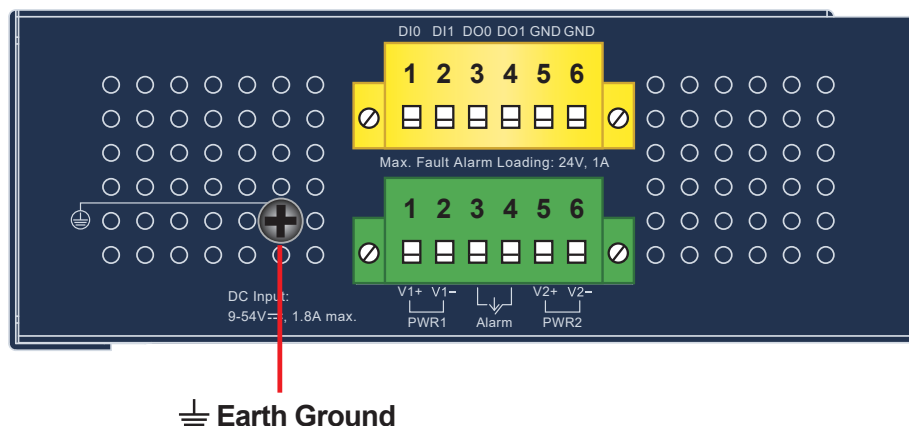


Caution

PWR1 and PWR2 must provide the **same DC voltage** while operating with dual power input.

3.2 Grounding the Device

Users **MUST** complete grounding wired with the device; otherwise, a sudden lightning could cause fatal damage to the device.

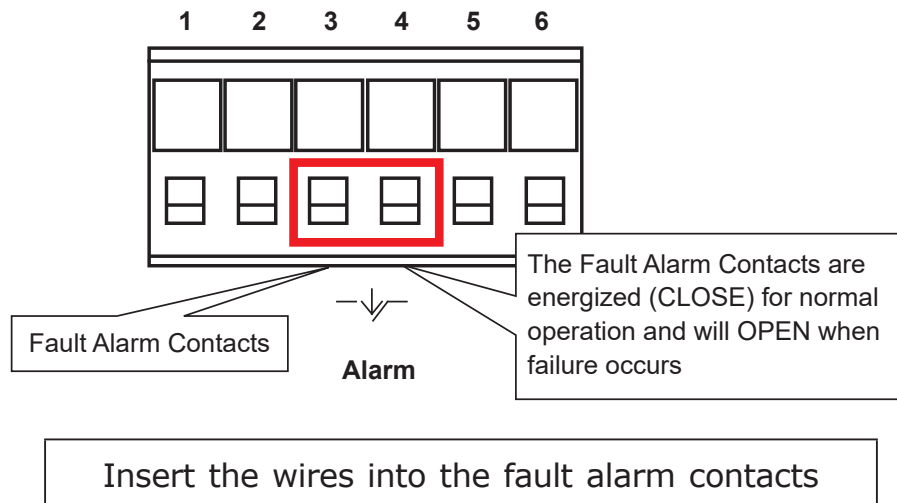


Note

EMD (Lightning) DAMAGE IS NOT COVERED UNDER WARRANTY.

3.3 Wiring the Fault Alarm Contact

The fault alarm contacts are in the middle of the terminal block connector as the picture shows below. Inserting the wires, the Industrial 802.11ax Wireless AP will detect the fault status of the power failure or port failure, and then will form an open circuit. The following illustration shows an application example for wiring the fault alarm contacts.



Note

1. The wire gauge for the terminal block should be in the range between 12 and 24 AWG.
2. Alarm relay circuit accepts up to 24V (max.) and 1A current.

3.4 Wi-Fi Antenna Installation

Step 1: Fasten the antennas to the antenna connectors on the front panel of the Industrial 802.11ax Wireless AP.

Step 2: You can bend the antennas to fit your actual needs.



Figure 3-2: Industrial 802.11ax Wireless AP Wi-Fi Antenna Installation

4. Starting Web Management

The following shows how to start up the **Web Management** of the Industrial 802.11ax Wireless AP. Note the Industrial 802.11ax Wireless AP is configured through an Ethernet connection. Please make sure the manager PC must be set to the same **IP subnet address**.

For example, the default IP address of the Industrial 802.11ax Wireless AP is **192.168.1.253**, then the manager PC should be set to **192.168.1.x** (where x is a number between 1 and 254, except 253), and the default subnet mask is 255.255.255.0.

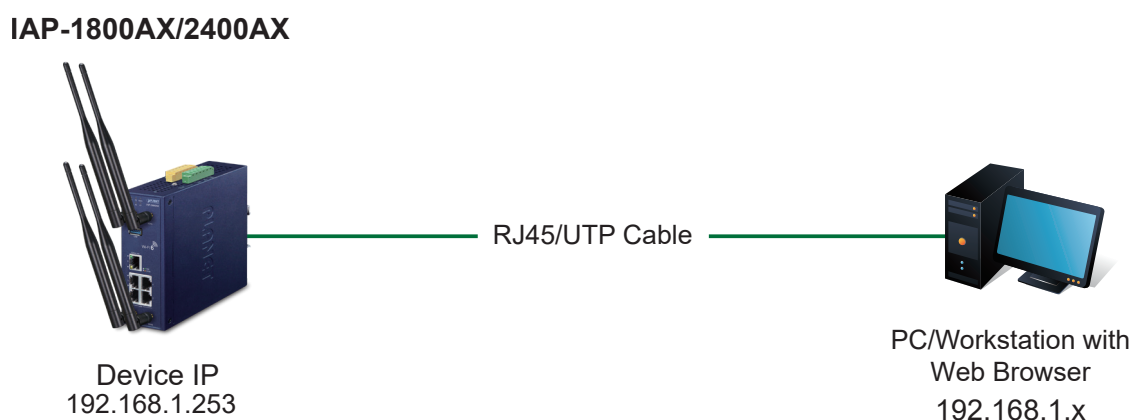


Figure 4-1: IP Management Diagram

4.1 Logging on to the Industrial 802.11ax Wireless AP

1. Use Chrome or other Web browser and enter IP address **<https://192.168.1.253>** (the factory default IP address) to access the Web interface.
2. When the following dialog box appears, please enter the default user name and password. The login screen in Figure 4-2 appears.

Default IP Address: **192.168.1.253** (The default IP address will be 192.168.1.253 if there is no DHCP server in the local network.)

Default Username: **admin**

Default Password: **admin**

Default 2.4GHz SSID: **PLANET_2.4G** (IAP-1800AX only)

Default 5GHz SSID: **PLANET_5G**



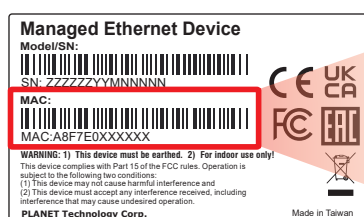
Note

The following Web screen is based on the firmware version before **December 2024**.

Default Username: **admin**

Default Password: **ap + the last 6 characters of the MAC ID in lowercase**

Find the MAC ID on your device label. The default password is "ap" followed by the last six lowercase characters of the MAC ID.



MAC ID: A8F7E0XXXXXX

Default Password: apxxxxxx

("x" means the last 6 digits of the MAC address.

All characters should be in lowercase.)

Figure 4-1: MAC ID



Note

This login method is based on the firmware version of **December 2024 or later**.



Figure 4-2: Web Login Screen



The following web screen is based on the IAP-2400AX; the display of the IAP-2400AX is the same as that of the IAP-1800AX.

3. The Industrial 802.11AX Wireless AP supports three operation modes:

- **Gateway Mode**
- **AP Mode (Default)**
- **Repeater Mode**

Please follow the wizard to do the first-time setup and select the mode preferred.



Figure 4-3: Web Wizard Operation Mode of Industrial 802.11ax Wireless AP

4. After Web setup wizard is completed, enter the new username and password. The main screen appears as Figure 4-4 shows.



Figure 4-4: Web Main Screen of Industrial 802.11ax Wireless AP

Now you can use the Web management interface to continue the Industrial 802.11ax Wireless AP management.

Please refer to the user's manual for more.

5. Recovering Back to Default Configuration

■ IP address has been changed or admin password has been forgotten –

To reset the IP address to the default IP address “192.168.1.253” or reset the login password to default value, press the hardware reset button on the front panel for about **10 seconds**. After the device is rebooted, you can log in the management Web interface within the same subnet of 192.168.1.xxx.

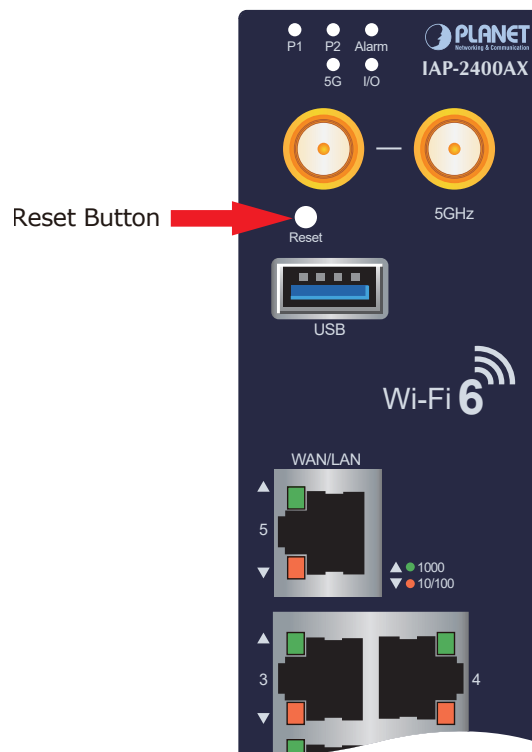


Figure 5-1: Industrial 802.11ax Wireless AP Reset Button

6. Central Management through PLANET NMS

Follow the steps below to discover the managed AP through PLANET NMS controller (NMS-500/NMS-1000V). Please ensure each managed AP uses a different static IP in the same subnet before physically connecting to the managed network.



Note

Please regularly check PLANET website for the latest compatible list of the controller/managed APs in each firmware version.

Step 1: Launch the Web browser (Google Chrome is recommended.) and enter the default IP address <https://192.168.1.100:8888> of the NMS controller. Then, enter the default username and password **"admin"** to log on to the system.

* The secure login with SSL (HTTPS) prefix is required.



Step 2: Go to the **"Domain"** page to discover and add the managed AP to the device list. Then, you can go to the **"AP Control-> AP Management"** page to configure pre-defined profiles to the managed AP without logging on to the AP's web page.

For further information about the configuration of Managed AP by using PLANET Smart AP Control, refer to the configuration guide to the NMS controller (NMS-500/NMS-1000V).

7. Customer Support

Thank you for purchasing PLANET products. You can browse our online FAQ resource and User's Manual on PLANET Web site first to check if it could solve your issue. If you need more support information, please contact PLANET support team.

PLANET online FAQs:

<https://www.planet.com.tw/en/support/faq>

Support team mail address:

support@planet.com.tw

IAP-1800AX and IAP-2400AX User's Manual:

<https://www.planet.com.tw/en/support/downloads?&method=keyword&keyword=IAP-1800AX&view=3#list>



Copyright © PLANET Technology Corp. 2025.

Contents are subject to revision without prior notice.

PLANET is a registered trademark of PLANET Technology Corp.

All other trademarks belong to their respective owners.