

Dual Band 802.11ax 3000Mbps Outdoor Wireless AP

WDAP-3000AX

Quick Installation Guide


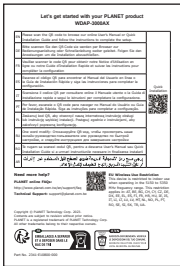




Table of Contents


| | |
|---|----|
| 1. Package Contents | 3 |
| 2. Physical Introduction | 4 |
| 3. Hardware Installation | 5 |
| 4. Connecting the AP (for Windows OS) | 7 |
| 5. Wired Network Configuration (Windows 10 and Windows 11) | 8 |
| 6. Entering into the Web Management..... | 9 |
| 7. Wireless Network Connection | 11 |
| 8. AP Discovery through PLANET NMS Controller (NMS-500/NMS-1000V) | 12 |
| 9. PLANET CloudViewer/CloudViewerPro App (Android & iOS) | 13 |
| Further Information: | 15 |

1. Package Contents

Thank you for choosing PLANET Outdoor Wireless AP. Before installing, please verify the contents inside the package box. The device mentioned herein is the brief name of the "Outdoor Wireless AP".


The WDAP-3000AX should contain the following items in the package:

| | | |
|---|---|---|
| WDAP-3000AX | QR Code Sheet x 1 | RJ45 Waterproof Kit x 1 |
|  |  |  |
| L-type Bracket x 1 | U-bolt Kit x 2 | Screw Set x 1 |
|  |  |  |



Note

If there is any item missing or damaged, please contact the seller immediately.



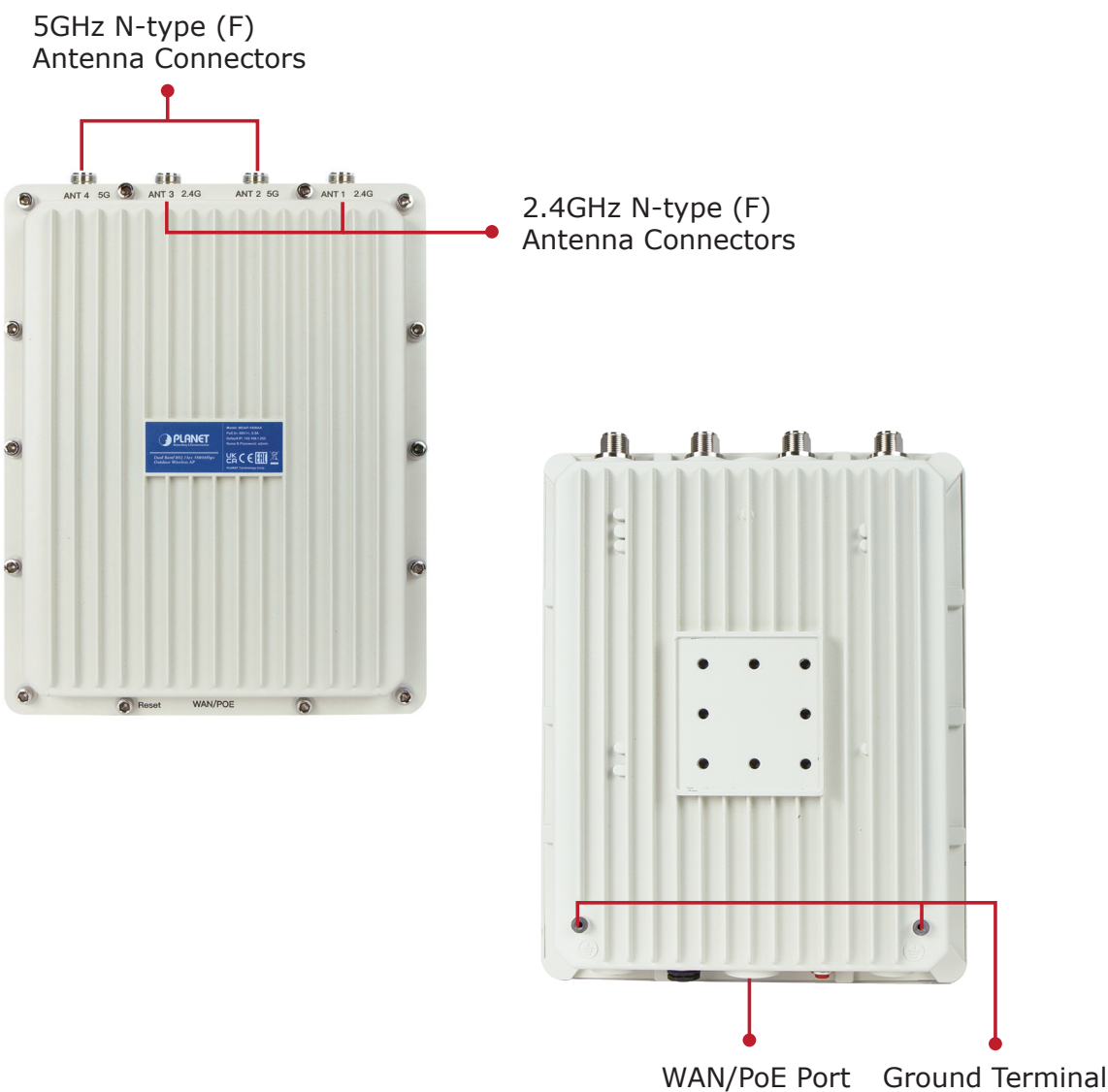
Caution

IMPORTANT SAFETY PRECAUTIONS:

- 1) **LIVES MAY BE AT RISK!** Please be aware of the electrical wires around. Carefully read the section **"OUTDOOR INSTALLATION WARNING"** in the manual before installation.
- 2) Users **MUST** complete grounding the device; otherwise, a sudden lightning could cause fatal damage to the device. **EMD (Lightning) DAMAGE IS NOT COVERED UNDER WARRANTY.**
- 3) Users **MUST** power off the device first before connecting the antenna to it; otherwise, damage might be caused to the device itself.
- 4) The Antenna and Surge Arrestor are required for each antenna connector, and must be purchased separately.

2. Physical Introduction

Front Panel

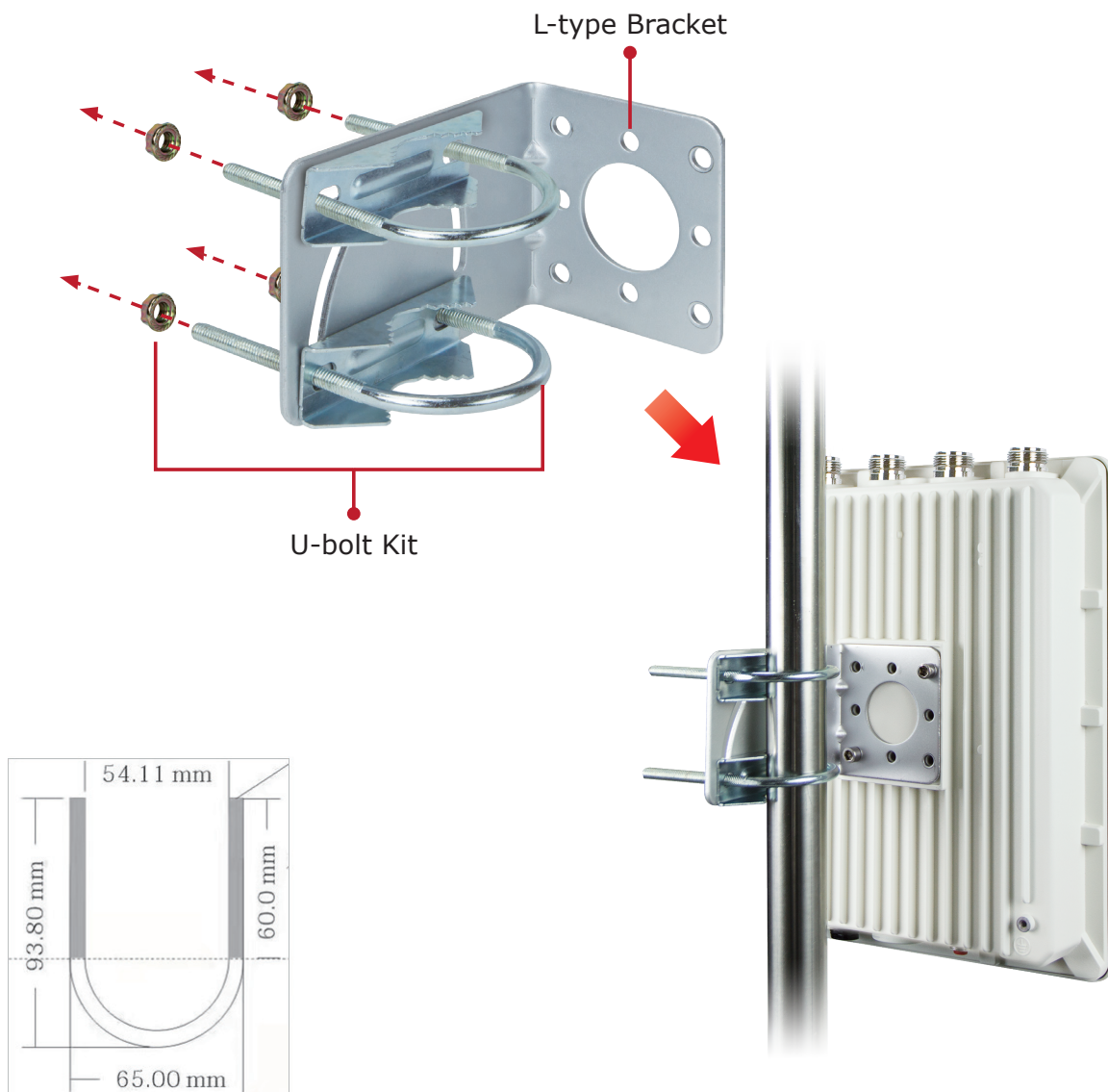


3. Hardware Installation

Step 1:

1. Install the backplane to the back of the AP.
2. Attach the L-type bracket to the backplane and fasten it.
3. Place the AP to the pole and fasten it with the U-bolt kit.

The AP can be mounted on the pole with a diameter of up to 2".

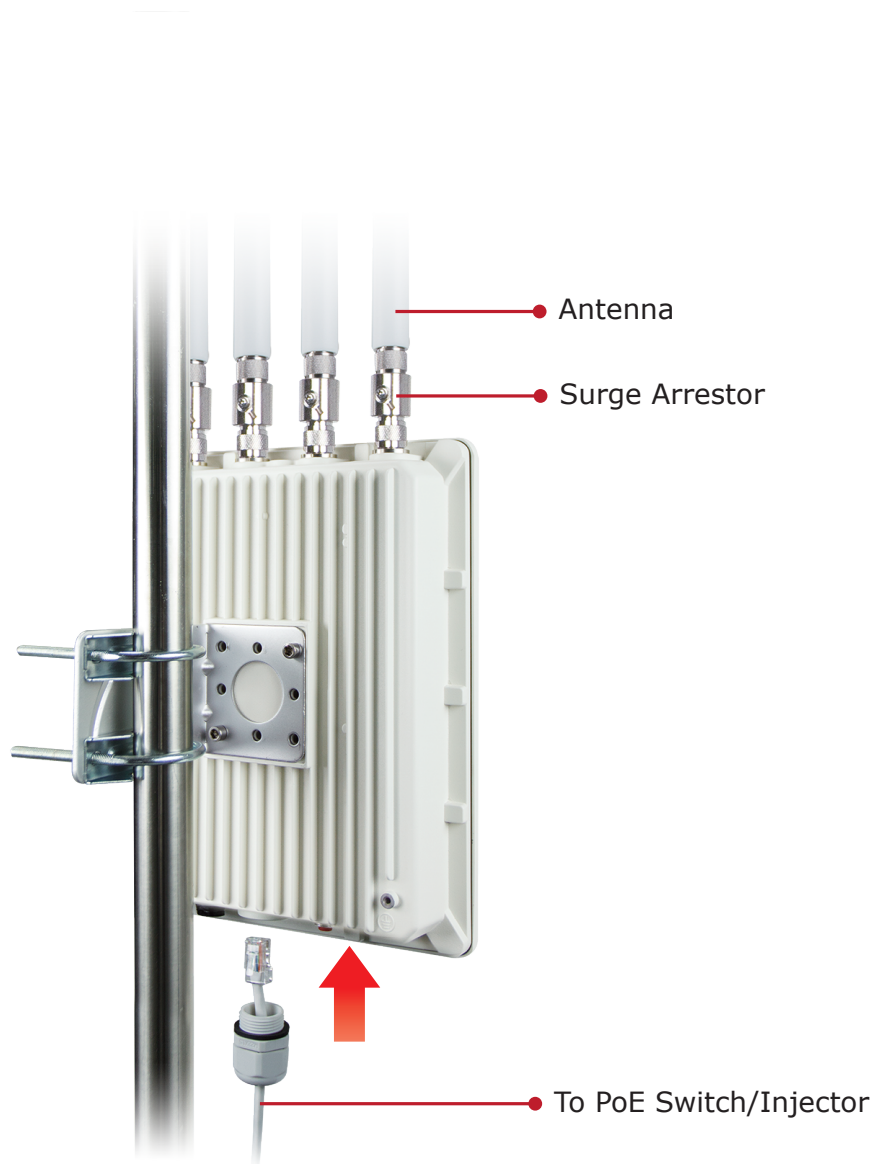


U-bolt Dimensions

Step 2:

1. Attach the surge arrestors to each antenna connector.
2. Attach the antenna equipped with N-type (M) connector to each surge arrestor. Otherwise, connect the antenna through the N-male (male pin) to N-male (male pin) cable.
3. Plug the RJ45 Ethernet cable into the PoE port of the AP through the waterproof kit, and plug the other side of the RJ45 cable into the PoE port of the PoE switch to finish the installation.

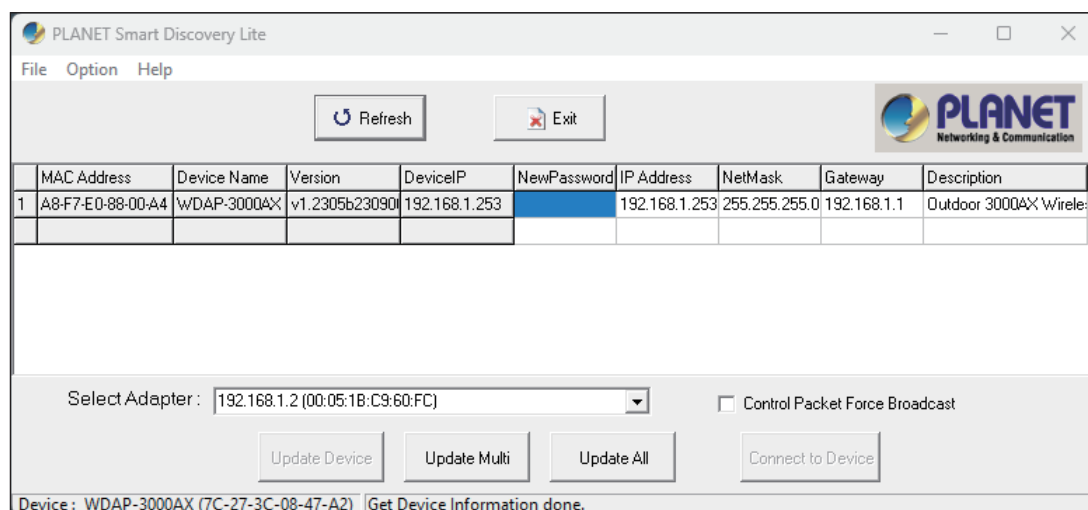
* Please remember to finish grounding by consulting the local electrical experts.



4. Connecting the AP (for Windows OS)

As the default setting of connection type of WDAP-3000AX is **DHCP**, your computer's IP address has to be the same network segment as the wireless AP. To find the IP address of the AP, use the utility of "Smart Discovery Lite", which can be found on PLANET official website.

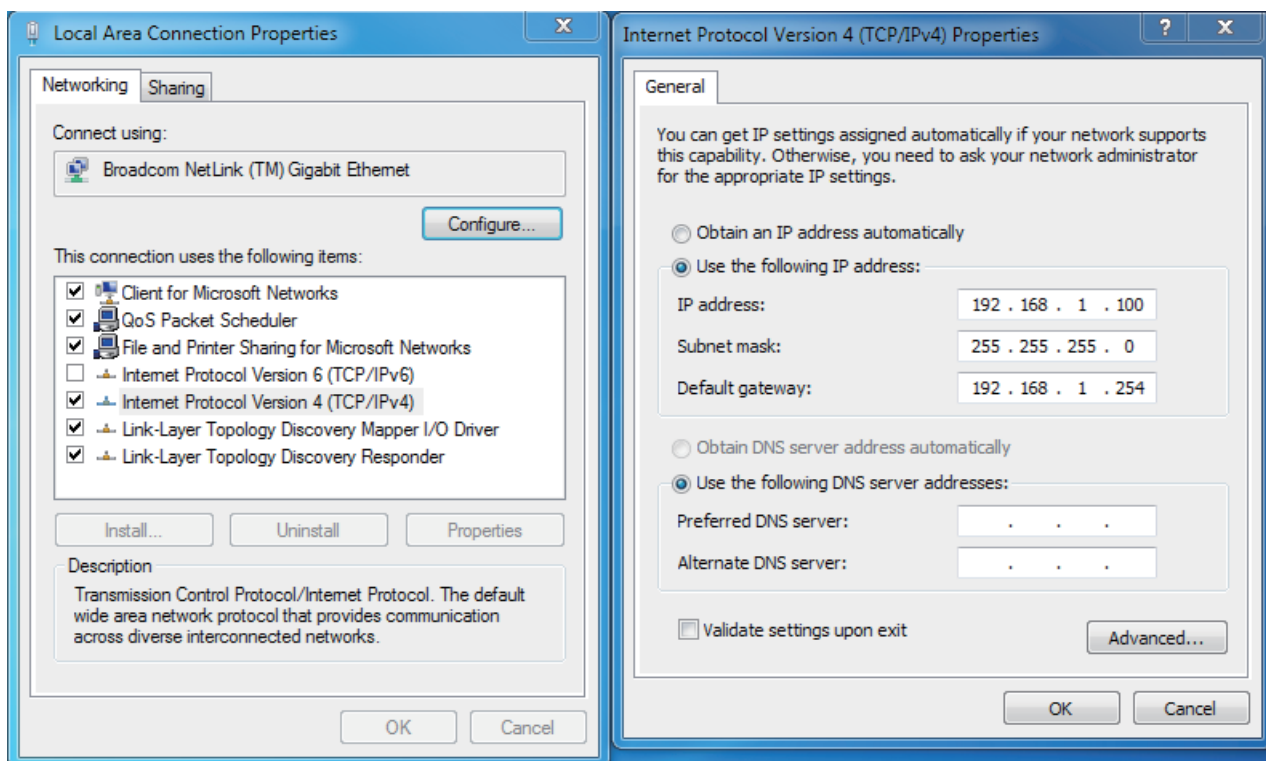
1. Launch the utility from your computer after you have downloaded and decompressed it.
2. Select your adapter to connect the AP.
3. Click the "**Refresh**" button.
4. The AP model and its IP address are shown.
5. Check whether the IP address of your adapter and the IP address of the AP are the same.
6. If yes, click "Connect to Devices" for the AP setting.
7. If no, go to the next page to set your wired or wireless setting.
8. If there is no DHCP server in the local network, the IP will go back to **192.168.1.253** by default after 60 seconds.



5. Wired Network Configuration (Windows 10 and Windows 11)

A computer with wired Ethernet connection is required for the first-time configuration of the wireless AP.

1. Click the **"Start"** button located at the lower-left corner of your computer.
2. Click **"Control Panel"**.
3. Double-click the **"Network and Sharing Center"** icon.
4. Click **"Change adapter settings"**.
5. Double-click **"Local Area Connection"**.
6. Select **"Internet Protocol Version 4 (TCP/IPv4)"** and click **"Properties"**.
7. Select **"Use the following IP address"** and then click the **"OK"** button twice to save the configuration. For example, the default IP address of the WDAP-3000AX is **192.168.1.253** and the router is 192.168.1.254. You may choose from 192.168.1.1 to 192.168.1.252.



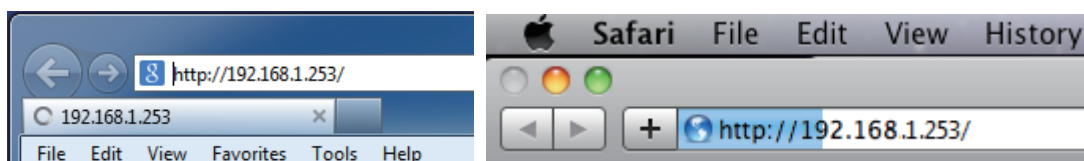
6. Entering into the Web Management

Default IP Address: **192.168.1.253** (The default IP address will be **192.168.1.253** if there is no DHCP server in the local network.)

Default SSID (2.4GHz): **PLANET_2.4G**

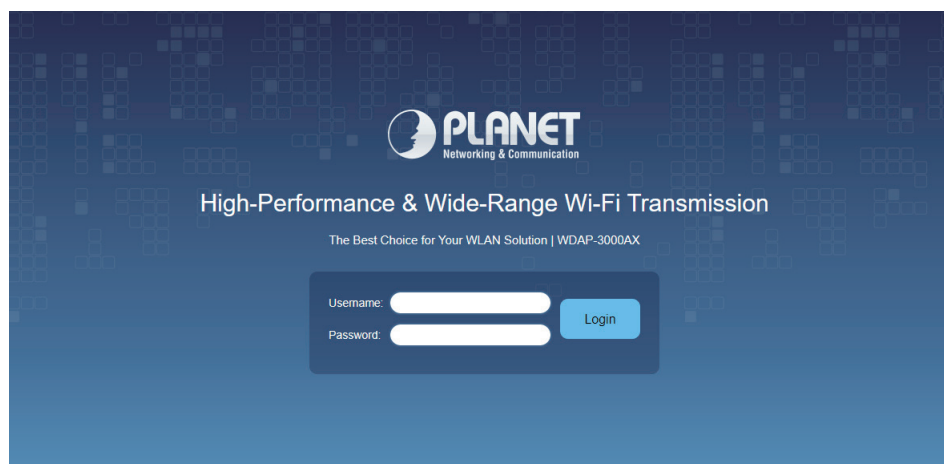
Default SSID (5GHz): **PLANET_5G**

Step 1: The Web management allows you to access and manage the wireless AP easily. Launch the Web browser and enter the default IP address **http://192.168.1.253**.



The following Web screen is based on the firmware version before **September 2024**.

Step 2a: When the following dialog box appears, please enter the default user name and password **"admin"**. Then please perform subsequent operations according to **Step 3**.



For security reasons, it is recommended to change the password at the first login and memorize it.

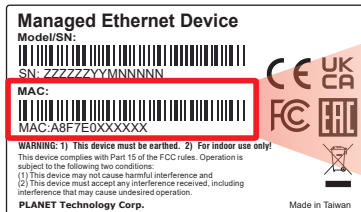


This login method is based on the firmware version of **September 2024 or later**.

Step 2b: Default Username: **admin**

Default Password: **ap** + the last 6 characters of the MAC ID in lowercase

Find the MAC ID on your device label. The default password is "ap" followed by the last six lowercase characters of the MAC ID.



MAC ID: A8F7E0XXXXXX

Default Password: apxxxxxx

("x" means the last 6 digits of the MAC address.
All characters should be in lowercase.)

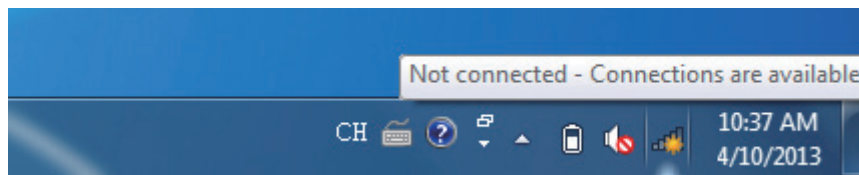
Step 2c: After logging in, you will be prompted to change the initial username and password to a permanent one. The Password must contain 8 to 31 characters, including uppercase, lowercase, numerals and other symbols. Please note spaces (blanks) are not accepted.

A screenshot of a web interface titled 'STEP 1 - Account Modification'. At the top, there is a progress bar with six steps: 1. Account, 2. Mode, 3. LAN, 4. Wireless Connection, 5. Wireless, and 6. Completed. Step 1 is currently active. Below the progress bar, there are three input fields: 'Username' with the value 'admin', 'Password', and 'Confirm Password'. Below these fields is a note: 'The password must contain 8~31 characters, including upper case, lower case, numerals and other symbols'. At the bottom right, there are two buttons: 'Cancel' and 'Next'.

Step 3: After you enter into the Web User Interface, please follow up the wizard to set your wireless AP.

7. Wireless Network Connection

Step 1: Right-click on the **network icon** displayed in the system tray.



Step 2: Highlight the wireless network (SSID) to connect and click the **[Connect]** button.



Step 3: Enter the **encryption key** of the WDAP-3000AX if necessary.

You have already finished the configuration of the WDAP-3000AX. Now you can use your smart phone, tablet, laptop, or any other Wi-Fi device to connect with it wirelessly and start surfing the internet.

8. AP Discovery through PLANET NMS Controller (NMS-500/NMS-1000V)

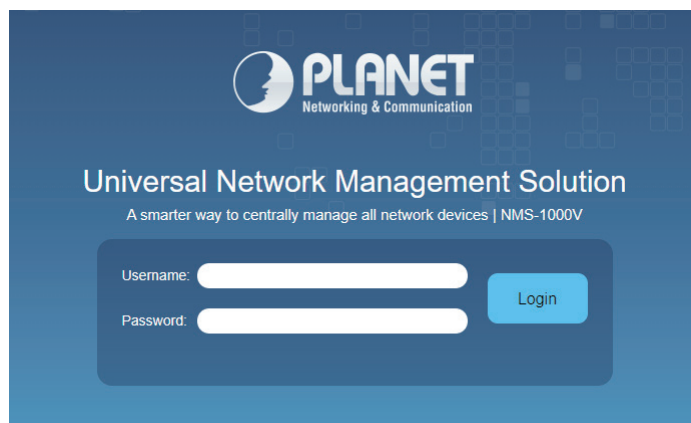
The WDAP-3000AX is the Smart AP series which can be centrally managed by PLANET NMS Controller.

Follow the steps below to discover the managed AP through PLANET NMS controller (NMS-500/NMS-1000V). Please ensure each managed AP uses a different static IP in the same subnet before physically connecting to the managed network.

*** Please regularly check PLANET website for the latest compatible list of the controller/managed APs in each firmware version.

Step 1: Launch the Web browser (Google Chrome is recommended.) and enter the default IP address <https://192.168.1.100:8888> of the NMS controller. Then, enter the default username and password **"admin"** to log on to the system.

* The secure login with SSL (HTTPS) prefix is required.



Step 2: Go to the "Domain" page to discover and add the managed AP to the device list. Then, you can go to the "AP Control-> AP Management" page to configure profiles to the managed AP without logging on to the AP's web page.

| Status | Group | MAC Address | Device Type | Model No. | Version | IP Address | Device Description | Action |
|--------------------------|-------|-------------------|-------------|---------------|----------------|-----------------|-------------------------------|--------|
| <input type="checkbox"/> | | a8:f7:e0:55:1d:10 | Wireless | WDAP-3000AX | v1.2105b230906 | 192.168.100.152 | Outdoor Wireless AP | |
| <input type="checkbox"/> | | a8:f7:e0:00:8b:11 | Wireless | WDAP-W1800AXU | v1.2102b230519 | 192.168.100.77 | 1800AXU_BSP-360-Demo_Repeater | |

For information about further configuration of Managed AP by using PLANET Smart AP Control, refer to the configuration guide of the NMS controller (NMS-500/NMS-1000V).

9. PLANET CloudViewer/CloudViewerPro App (Android & iOS)

The WDAP-3000AX is the Smart AP series which can be monitored by PLANET CloudViewer/CloudViewerPro app.

Step 1: Download PLANET CloudViewerPro app

Get PLANET CloudViewerPro app from the Apple App Store or Google play, or simply scan the QR code.



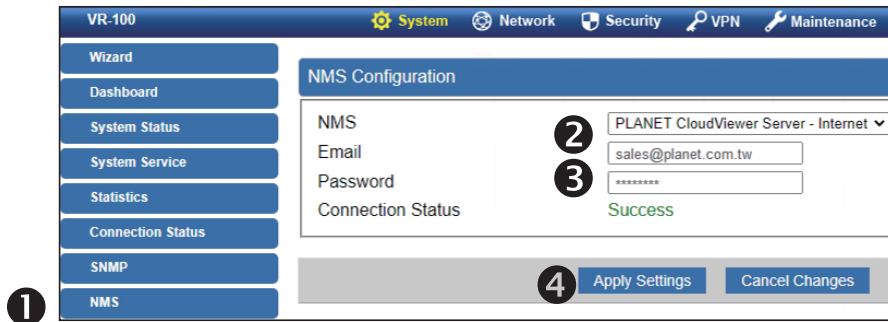
Step 2: Register

Launch **PLANET CloudViewerPro app** and log in with your PLANET CloudViewerPro app. If you don't have an account, register an account with an e-mail address first.



Step 3: Bind Devices

1. Log in and go to the device **NMS** page
2. Select and enable **PLANET CloudViewer Server – Internet** function
3. Fill in PLANET CloudViewer account (e-mail address) and password.

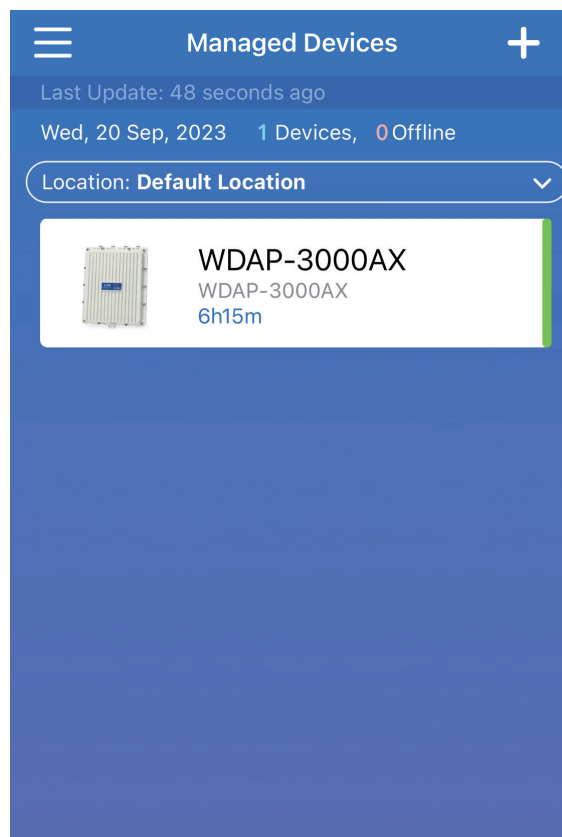


If CloudViewer server is connected, the connection status will show **success**.

If the server fails to connect, the connection status will show **authentication failed**.

Step 4: Log in to CloudViewerPro

After you get a Success indication from your device, you may now log in the app again to find your device in the list.



Further Information:

The above steps introduce the simple installations and configurations of the device. For further configurations, please refer to the user manual, which can be downloaded from the website.

WDAP-3000AX

<https://www.planet.com.tw/en/support/download.php?&method=keyword&keyword=WDAP-3000AX&view=3#list>



PLANET Network Management Solution (NMS):

<https://www.planet.com.tw/en/products/network-management>



If you have further questions, please contact the local dealer or distributor where you purchased this product.