

**Enterprise Dual 10G VPN Security Router
with 4-Port 10/100/1000T**

XVR-800

Quick Installation Guide

Table of Contents

1. Package Contents	3
2. Requirements	4
3. Starting Web Management	5
3.1 Logging in to the Router.....	5
4. Recovering Back to Default Configuration.....	10
5. Customer Support	11

1. Package Contents

Thank you for purchasing PLANET Enterprise Dual 10G VPN Security Router. The descriptions of this series are shown below:

XVR-800	Enterprise Dual 10G VPN Security Router with 4-Port 10/100/1000T
---------	--

“**Router**” mentioned in this Quick Installation Guide refers to the above models.

Open the box of the Router and carefully unpack it. The box should contain the following items:

Model Name	
Packaged Item	XVR-800
The Router	■
QR Code Sheet	■
CloudNMS Quick Guide	■
Two Rack-mounting Brackets with Attachment Screws	■
Power Cord	■
SFP Dust Caps	x 1

If any item is found missing or damaged, please contact your local reseller for replacement.

2. Requirements

- The Router provides local and remote login interface for management purposes. The following equipment is necessary for further management:
- **Workstations** running Windows 7/8/10/11, macOS 10.12 or later, Linux Kernel 2.6.18 or later, or other modern operating systems are compatible with TCP/IP Protocols.
- Workstations are installed with **Ethernet NIC** (Network Interface Card)
- **Ethernet Port Connection**
 - **Network cables** -- Use standard network (UTP) cables with RJ45 connectors.
 - The above PC is installed with **Web browser**.



Note

It is recommended to use Google Chrome, Microsoft Edge or Firefox to access the Router. If the Web interface of the Router is not accessible, please turn off the anti-virus software or firewall and then try it again.

3. Starting Web Management

The following shows how to start up the **Web Management** of the Router. Note the Router is configured through an Ethernet connection. Please make sure the manager PC must be set to the same **IP subnet address**.

For example, the default IP address of the Router is **192.168.1.1**, then the manager PC should be set to **192.168.1.x** (where x is a number between 1 and 254, except 1), and the default subnet mask is 255.255.255.0.

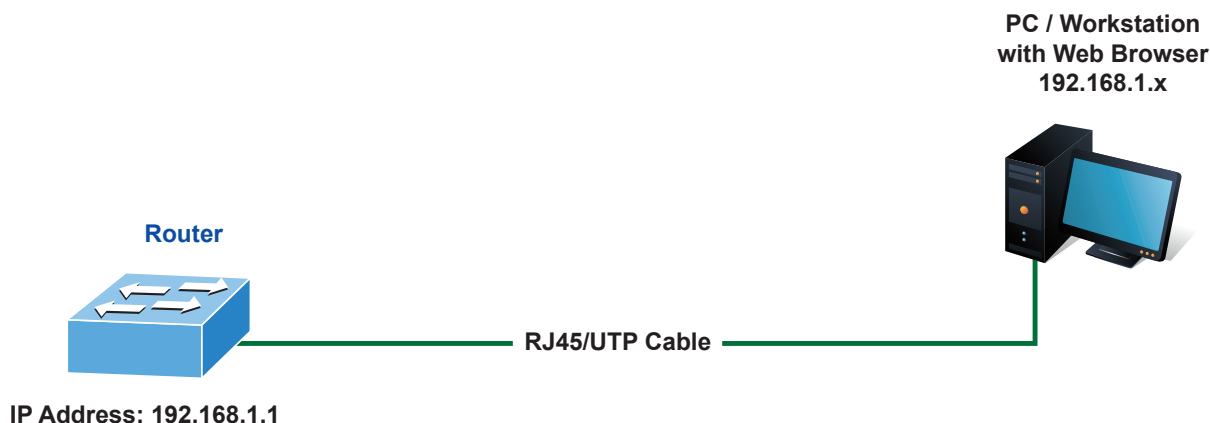


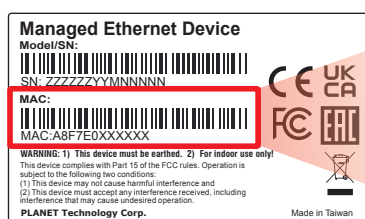
Figure 2-1: IP Management Diagram

3.1 Logging in to the Router

1. Use Chrome 98.0.xxx or above Web browser and enter IP address **https://192.168.1.1** to access the Web interface.
2. When the following dialog box appears, please enter the default user name **"admin"** and and password. Refer to **Section 2.1** to determine your initial login password.

Default IP Address: **192.168.1.1**
Default User Name: **admin**
Default Password: **cg + the last 6 characters of the MAC ID in lowercase**

3. Find the MAC ID on your device label. The default password is "cg" followed by the last six lowercase characters of the MAC ID.



MAC ID: A8F7E0XXXXXX
Default Password: swxxxxxx
("x" means the last 6 digits of the MAC address.
All characters should be in lowercase.)

Figure 2-2: Industrial Router MAC ID Label



Figure 2-3: Login Screen

4. After logging in, you will be prompted to change the initial password to a permanent one.

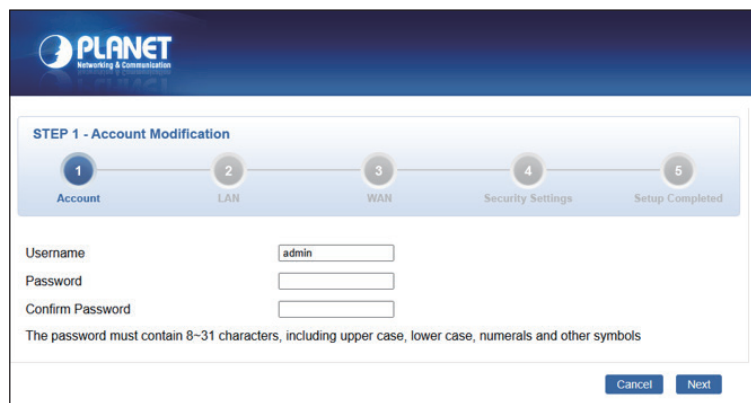


Figure 2-4: Create a New Password

5. After completing the account setup, configure the LAN IP address, subnet mask, and DHCP server settings. Click "Next" to continue to the WAN setup.

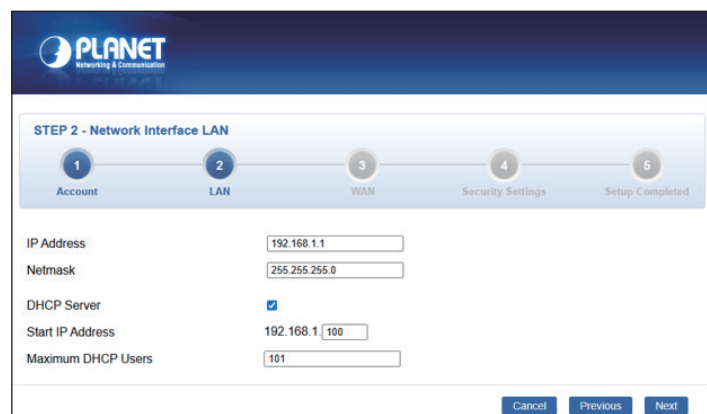


Figure 2-5: Network Interface LAN Configuration Page

- Configure the WAN interface settings, including selecting the interface and connection type (e.g., DHCP). Click "Next" to proceed to the security settings.

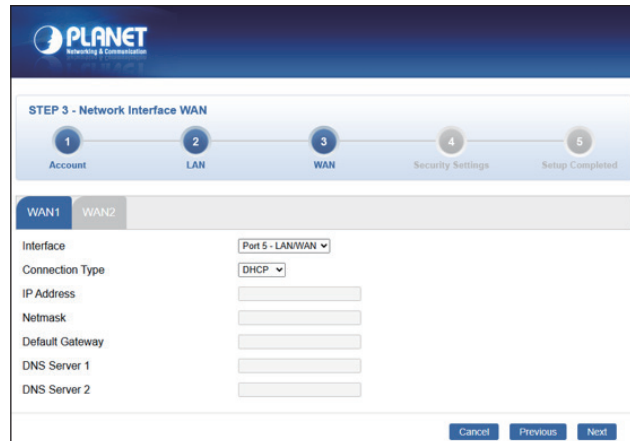


Figure 2-6: Network Interface WAN Configuration Page

- Configure the security settings, including firewall and traffic protection options. Click "Next" to complete the setup.

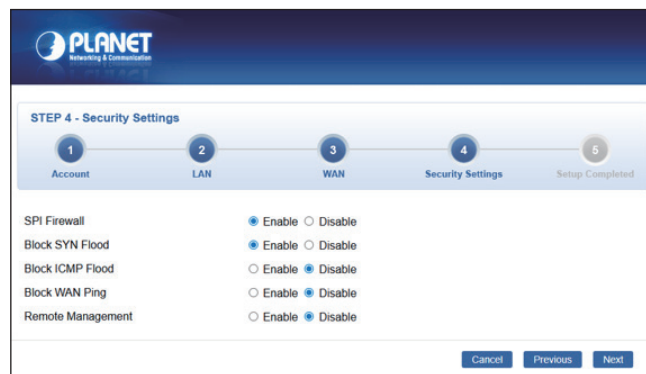


Figure 2-7: Security Settings Configuration Page

- Review the configuration summary of LAN, WAN, and security settings. Click "Finish" to complete the setup.

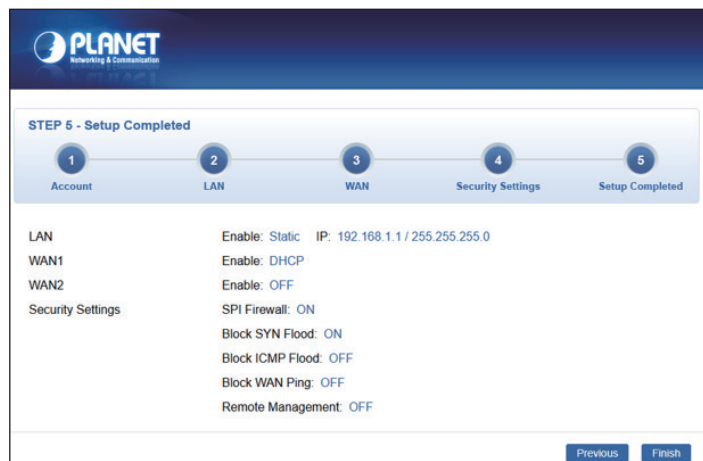


Figure 2-8: Setup Completed Page

- Enter the default username and password, then set a new password according to the rule-based prompt and confirm it. Upon success, press any key to return to the login prompt. Log in with "new username" and the "new password" to access the Web interface.

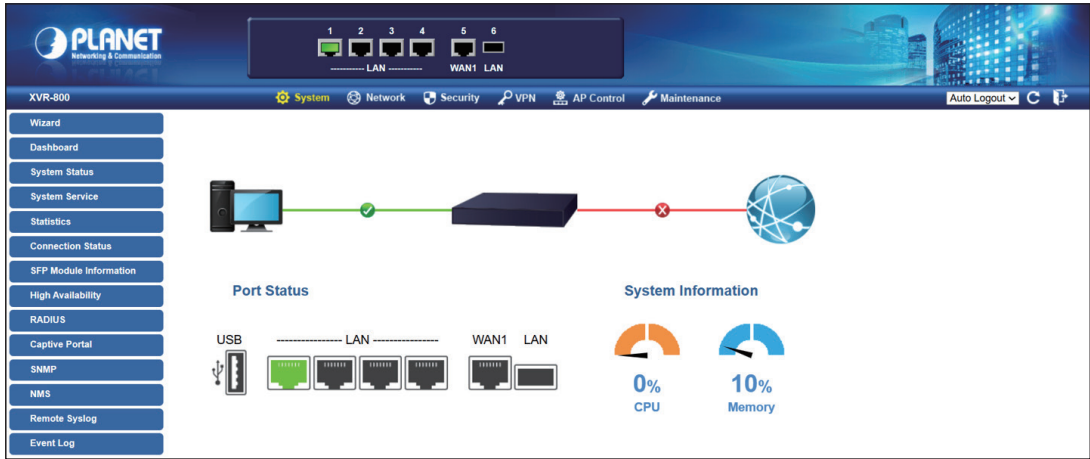


Figure 2-9: Web Main Screen of Router

The Router Menu on the top of the Web page lets you access all the commands and statistics the Router provides. The Switch Menu always contains one or more buttons, such as **"System"**, **"Network"**, **"Security"**, **"VPN"** **"AP Control"** and **"Maintenance"**.



VPN	AP Control	Maintenance
IPsec	Preference	Administrator
IPsec Remote Server	AP Search	Date & Time
GRE	AP Management	Save/Restore Configuration
PPTP	AP Group Management	Firmware Upgrade
L2TP	SSID Profile	Reboot / Reset
SSL VPN Server	Radio 2.4GHz Profile	Auto Reboot
SSL VPN Client	Radio 5GHz Profile	Diagnostics
WireGuard VPN Server	Statistic AP Status	
WireGuard VPN Client	Map It	
Certificates	Upload Map	
VPN Connection		
SD WAN		

Figure 2-10: Router Menu

Now, you can use the Web management interface to continue the Switch management. Please refer to the user's manual for more.

4. Recovering Back to Default Configuration

■ IP address has been changed or admin password has been forgotten –

To reset the IP address to the default IP Address “**192.168.1.1**” and the user name password to factory default mode (default password is admin or cg + the last 6 characters of the MAC ID in lowercase), press the hardware-based reset button on the front panel for about 5 seconds. After the device is rebooted, you can log in the management Web interface within the same subnet of 192.168.1.xx.



Figure 5-1: XVR-800 Reset Button

5. Customer Support

Thank you for purchasing PLANET products. You can browse our online FAQ resource and User's Manual on PLANET Web site first to check if it could solve your issue. If you need more support information, please contact PLANET support team.

PLANET online FAQs:

<https://www.planet.com.tw/en/support/faq>

Support team mail address:

support@planet.com.tw

XVR-800 User's Manual:

<https://www.planet.com.tw/en/support/download.php?&method=keyword&keyword=XVR-800&view=3#list>



(Please select your switch model name from Product Model drop-down menu)

Copyright © PLANET Technology Corp. 2026.

Contents are subject to revision without prior notice.

PLANET is a registered trademark of PLANET Technology Corp.

All other trademarks belong to their respective owners.