

**Dual 10G Zero Trust Security Gateway with 4-Port  
10/100/1000T**

**ZT-800**

Quick Installation Guide

# Table of Contents

1. Package Contents .....	3
2. Requirements .....	4
3. Starting Web Management .....	5
3.1 Logging in to the Router.....	5
4. Recovering Back to Default Configuration.....	10
5. Customer Support .....	11

## 1. Package Contents

Thank you for purchasing PLANET Enterprise Dual 10G Zero Trust Gateway. The descriptions of this series are shown below:

ZT-800	Dual 10G Zero Trust Security Gateway with 4-Port 10/100/1000T
--------	---

“**Gateway**” mentioned in this Quick Installation Guide refers to the above models.

Open the box of the Gateway and carefully unpack it. The box should contain the following items:

Model Name	
Packaged Item	ZT-800
The Gateway	■
QR Code Sheet	■
CloudNMS Quick Guide	■
Two Rack-mounting Brackets with Attachment Screws	■
Power Cord	■
SFP Dust Caps	1

If any item is found missing or damaged, please contact your local reseller for replacement.

## 2. Requirements

- The Gateway provides local and remote login interface for management purposes. The following equipment is necessary for further management:
- **Workstations** running Windows 7/8/10/11, macOS 10.12 or later, Linux Kernel 2.6.18 or later, or other modern operating systems are compatible with TCP/IP Protocols.
- Workstations are installed with **Ethernet NIC** (Network Interface Card)
- **Ethernet Port Connection**
  - **Network cables** -- Use standard network (UTP) cables with RJ45 connectors.
  - The above PC is installed with **Web browser**.



Note

It is recommended to use Google Chrome, Microsoft Edge or Firefox to access the Gateway. If the Web interface of the Gateway is not accessible, please turn off the anti-virus software or firewall and then try it again.

### 3. Starting Web Management

The following shows how to start up the **Web Management** of the Gateway. Note the Gateway is configured through an Ethernet connection. Please make sure the manager PC must be set to the same **IP subnet address**.

For example, the default IP address of the Gateway is **192.168.1.1**, then the manager PC should be set to **192.168.1.x** (where x is a number between 1 and 254, except 1), and the default subnet mask is 255.255.255.0.

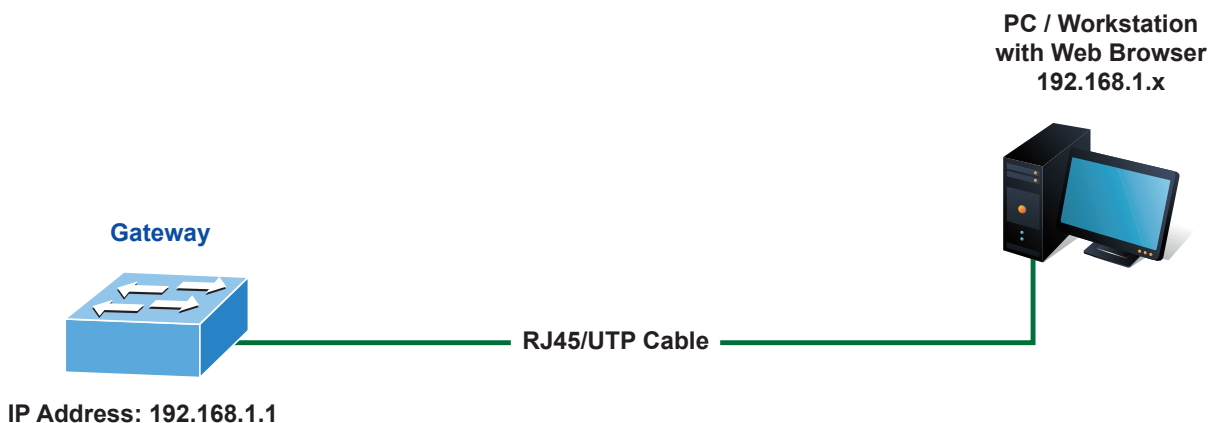


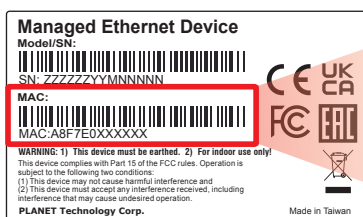
Figure 2-1: IP Management Diagram

#### 3.1 Logging in to the Gateway

1. Use Chrome 98.0.xxx or above Web browser and enter IP address **https://192.168.1.1** to access the Web interface.
2. When the following dialog box appears, please enter the default user name **"admin"** and password. Refer to **Section 2.1** to determine your initial login password.

Default IP Address: **192.168.1.1**  
Default User Name: **admin**  
Default Password: **cg + the last 6 characters of the MAC ID in lowercase**

3. Find the MAC ID on your device label. The default password is "cg" followed by the last six lowercase characters of the MAC ID.



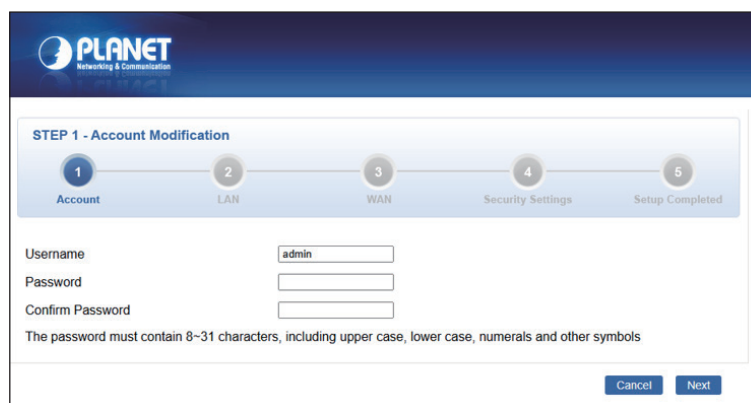
MAC ID: A8F7E0XXXXXX  
Default Password: swxxxxxx  
("x" means the last 6 digits of the MAC address.  
All characters should be in lowercase.)

Figure 2-2: Industrial Router MAC ID Label



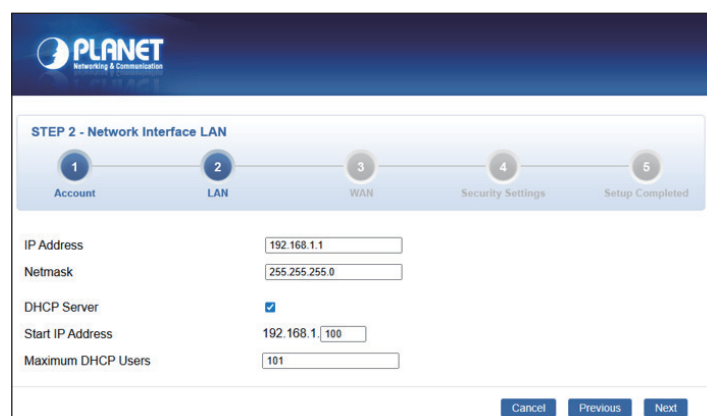
**Figure 2-3:** Login Screen

4. After logging in, you will be prompted to change the initial password to a permanent one.



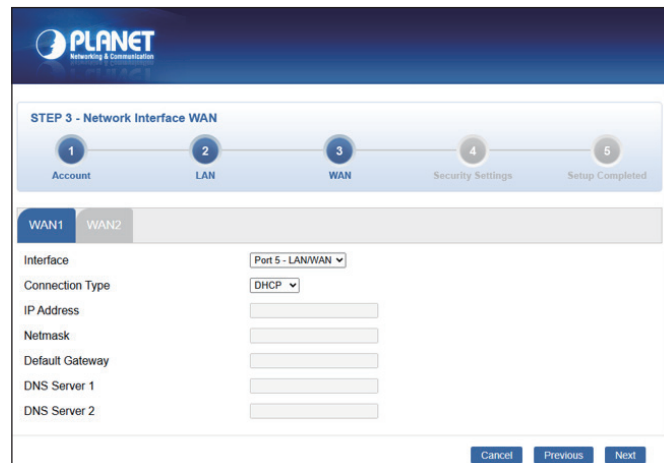
**Figure 2-4:** Create a New Password

5. After completing the account setup, configure the LAN IP address, subnet mask, and DHCP server settings. Click "Next" to continue to the WAN setup.



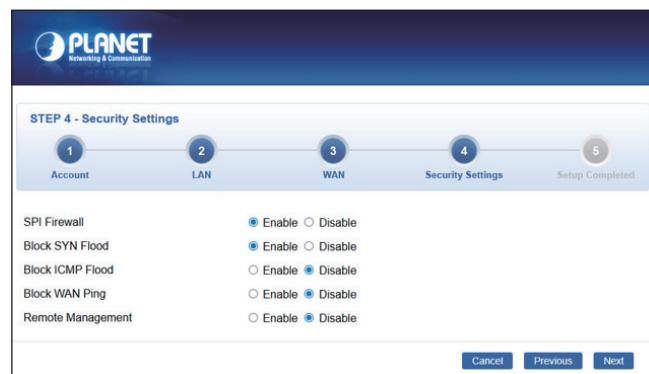
**Figure 2-5:** Network Interface LAN Configuration Page

- Configure the WAN interface settings, including selecting the interface and connection type (e.g., DHCP). Click "Next" to proceed to the security settings.



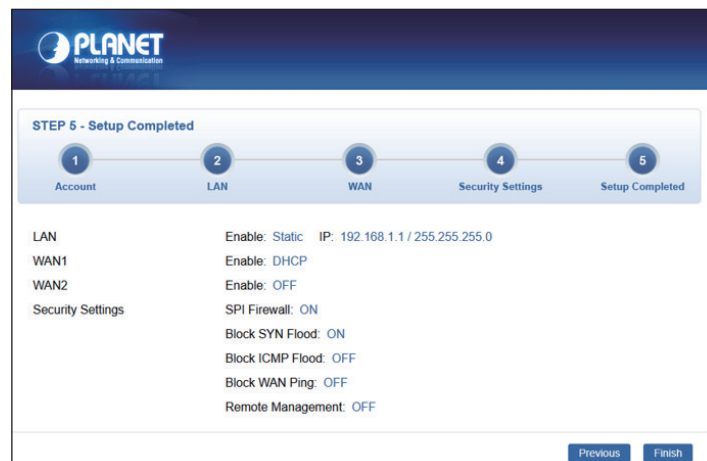
**Figure 2-6:** Network Interface WAN Configuration Page

- Configure the security settings, including firewall and traffic protection options. Click "Next" to complete the setup.



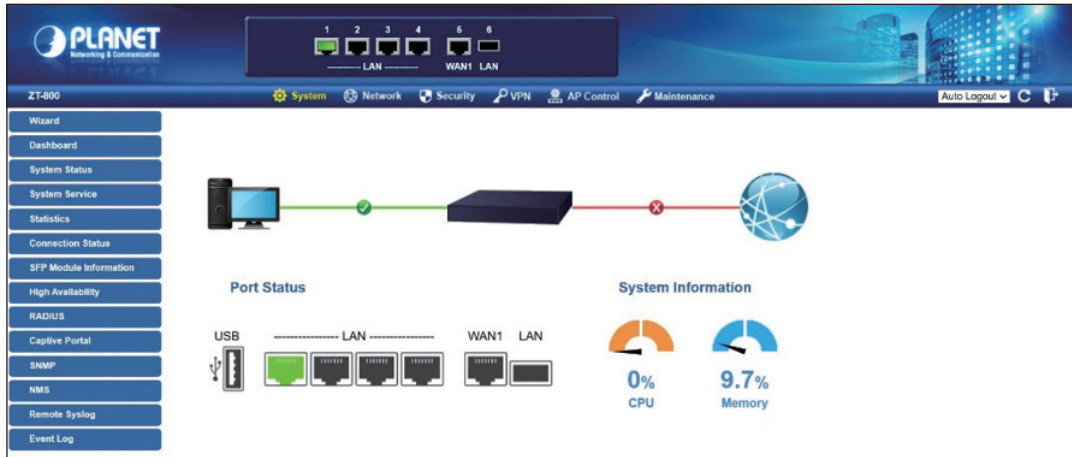
**Figure 2-7:** Security Settings Configuration Page

- Review the configuration summary of LAN, WAN, and security settings. Click "Finish" to complete the setup.



**Figure 2-8:** Setup Completed Page

- Enter the default username and password, then set a new password according to the rule-based prompt and confirm it. Upon success, press any key to return to the login prompt. Log in with "new username" and the "new password" to access the Web interface.



**Figure 2-9:** Web Main Screen of Gateway

The Gateway Menu on the top of the Web page lets you access all the commands and statistics the Router provides. The Switch Menu always contains one or more buttons, such as **"System"**, **"Network"**, **"Security"**, **"VPN"**, **"AP Control"** and **"Maintenance"**.



System	Network	Security
Wizard	NAT	Firewall
Dashboard	Priority	Authentication
System Status	WAN	MAC Filtering
System Service	WAN Advanced	IP Filtering
Statistics	LAN	Web Filtering
Connection Status	Multi-Subnet	Port Forwarding
SFP Module Information	VLAN	QoS
High Availability	UPnP	DMZ
RADIUS	Routing	
Captive Portal	RIP	
SNMP	OSPF	
NMS	IGMP	
Remote Syslog	IPv6	
Event Log	DHCP	
	DDNS	
	MAC Address Clone	

VPN	AP Control	Maintenance
IPsec	Preference	Administrator
IPsec Remote Server	AP Search	Date & Time
GRE	AP Management	Save/Restore Configuration
PPTP	AP Group Management	Firmware Upgrade
L2TP	SSID Profile	Reboot / Reset
SSL VPN Server	Radio 2.4GHz Profile	Auto Reboot
SSL VPN Client	Radio 5GHz Profile	Diagnostics
WireGuard VPN Server	Statistic AP Status	
WireGuard VPN Client	Map It	
Zero Trust VPN	Upload Map	
Certificates		
VPN Connection		
SD WAN		

**Figure 2-10:** Gateway Menu

Now, you can use the Web management interface to continue the Switch management. Please refer to the user's manual for more.

## 4. Recovering Back to Default Configuration

### ■ IP address has been changed or admin password has been forgotten –

To reset the IP address to the default IP Address “**192.168.1.1**” and the user name password to factory default mode (default password is admin or cg + the last 6 characters of the MAC ID in lowercase), press the hardware-based **reset button** on the front panel for about **5 seconds**. After the device is rebooted, you can log in the management Web interface within the same subnet of 192.168.1.xx.



Figure 5-1: ZT-800 Reset Button

## 5. Customer Support

Thank you for purchasing PLANET products. You can browse our online FAQ resource and User's Manual on PLANET Web site first to check if it could solve your issue. If you need more support information, please contact PLANET support team.

PLANET online FAQs:

<https://www.planet.com.tw/en/support/faq>

Support team mail address:

[support@planet.com.tw](mailto:support@planet.com.tw)

ZT-800 User's Manual:

<https://www.planet.com.tw/en/support/download.php?&method=keyword&keyword=ZT-800&view=3#list>



(Please select your switch model name from Product Model drop-down menu)

Copyright © PLANET Technology Corp. 2026.

Contents are subject to revision without prior notice.

PLANET is a registered trademark of PLANET Technology Corp.

All other trademarks belong to their respective owners.